

# MAZDA

6.M.2

## DUAL SENSITIVITY TUNING INDICATOR

Indirectly heated—for parallel operation

6.M.2

### GENERAL

The 6M2 is a cathode ray tuning indicator of the dual sensitivity type, giving a fluorescent image in the form of a Maltese Cross. One pair of angles are of low sensitivity, whilst the other pair are of high sensitivity, the cut-off voltages being - 20 and - 4 volts respectively, (with an anode supply voltage of 250 volts).

### RATING

Heater Voltage (volts)	Vh	6.3
Heater Current (amps)	Ih	0.2
Maximum Anode Voltage (volts)	Va(max)	300
Maximum Anode Dissipation (watts) (either section)	Pa(max)	0.5
Maximum Target Voltage (volts)	Vt(max)	250
Minimum Target Voltage (volts)	Vt(min)	90
Maximum Cathode Current (mA)	Ic(max)	5
Maximum Heater/Cathode Voltage (DC) (volts)	Vh-k(max)	100
Maximum Grid to Cathode Resistance (Megohms)	Rg-k(max)	3

### DIMENSIONS

Maximum Overall Length (mm)	90
Maximum Diameter (mm)	28
Maximum Seated Height (mm)	76

MOUNTING POSITION - Unrestricted

### TYPICAL OPERATION

H.T. Supply Voltage (volts)	200	250
Target Voltage (volts)	200	250
Target Current at Vg1 = 0 (mA)	0.3	0.46

#### 1st Section (a' - for strong signals)

Anode load resistance (megohms)	0	1	-20	0	1	-20
Grid Voltage (volts)	0.2		0.06	0.25		0.08
Anode Current (mA)	82		4	83		6
Shadow Angle (degrees)						

#### 2nd Section (a" - for weak signals)

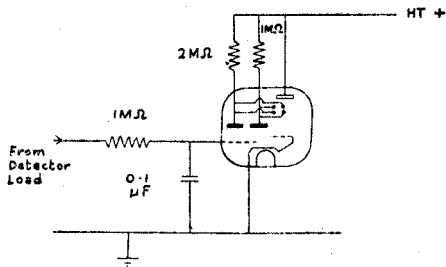
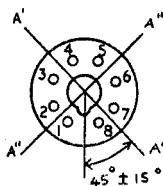
Anode load resistance (megohms)	0	2	-3	0	2	-4
Grid Voltage (volts)	0.1		0.06	0.12		0.07
Anode Current (mA)	75		18	75		15
Shadow Angle (degrees)						

**MAZDA**

6.M.2

**DUAL SENSITIVITY TUNING INDICATOR**

Indirectly heated—for parallel operation

TYPICAL CIRCUITBASE - International Octal (I.O.8)

VIEWED FROM FREE END OF PINS

POSITION OF SHADOW

A' - A' Centre Line of a' shadow.

A'' - A'' Centre Line of a'' shadow.

CONNECTIONS

Pin	Internal Connection	I.C.
Pin 1	Internal Connection	I.C.
Pin 2	Heater	h
Pin 3	Anode 2	a''
Pin 4	Grid	g
Pin 5	Target	t
Pin 6	Anode 1	a'
Pin 7	Heater	h
Pin 8	Cathode	k

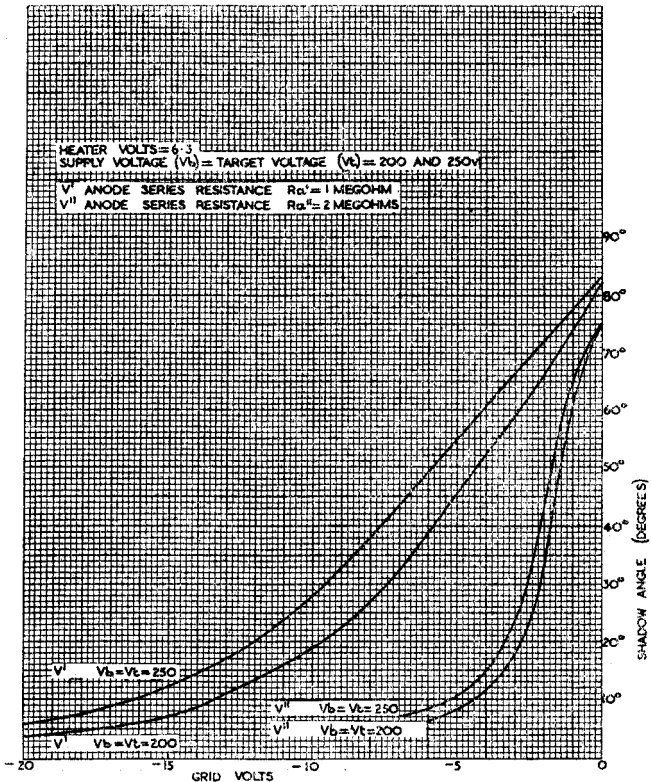
# MAZDA

## 6.M.2

### DUAL SENSITIVITY TUNING INDICATOR

Indirectly heated—for parallel operation

6.M.2



6.M.2

MAZDA

6.M.2

DUAL SENSITIVITY TUNING INDICATOR

Indirectly heated—for parallel operation

