

SANYO	No.3580A	2SC4696
	NPN Epitaxial Planar Silicon Darlington Transistor	
Driver Applications		

Applications

- Motor drivers, printer hammer drivers.

Features

- Darlington connection.
- On-chip Zener diode of $90 \pm 10V$ between collector and base.
- High DC current gain.
- High inductive load handling capability.

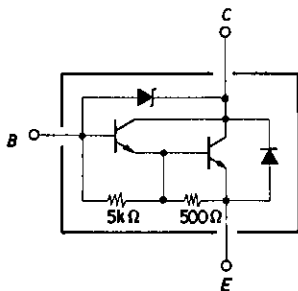
Absolute Maximum Ratings at $T_a = 25^\circ C$

				unit
Collector-to-Base Voltage	V_{CBO}	With a low-voltage diode ($90 \pm 10V$)	80	V
Collector-to-Emitter Voltage	V_{CEO}	With a low-voltage diode ($90 \pm 10V$)	80	V
Emitter-to-Base Voltage	V_{EBO}		6	V
Collector Current	I_C		0.8	A
Collector Current (Pulse)	I_{CP}		1.5	A
Base Current	I_B		0.1	A
Collector Dissipation	P_C		1.0	W
Junction Temperature	T_j		150	$^\circ C$
Storage Temperature	T_{stg}		-55 to +150	$^\circ C$

Electrical Characteristics at $T_a = 25^\circ C$

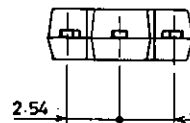
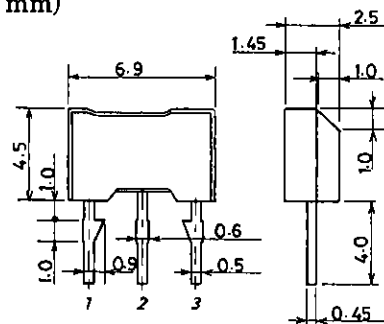
			min	typ	max	unit
Collector Cutoff Current	I_{CBO}	$V_{CB} = 60V, I_E = 0$			10	μA
Emitter Cutoff Current	I_{EBO}	$V_{EB} = 5V, I_C = 0$			2	mA
DC Current Gain	h_{FE}	$V_{CE} = 3V, I_C = 500mA$	1000		20000	
C-E Saturation Voltage	$V_{CE(sat)}$	$I_C = 500mA, I_B = 1mA$		0.95	1.5	V
B-E Saturation Voltage	$V_{BE(sat)}$	$I_C = 500mA, I_B = 1mA$		1.5	2.0	V
C-B Breakdown Voltage	$V_{(BR)CBO}$	$I_C = 100\mu A, I_E = 0$	80		100	V
C-E Breakdown Voltage	$V_{(BR)CEO}$	$I_C = 1mA, R_{BE} = \infty$	80		100	V
Inductive Load Handling Capability	Es/b	$L = 30mH, R_{BE} = 100\Omega$	25			mJ

Electrical Connection



Package Dimensions 2064A

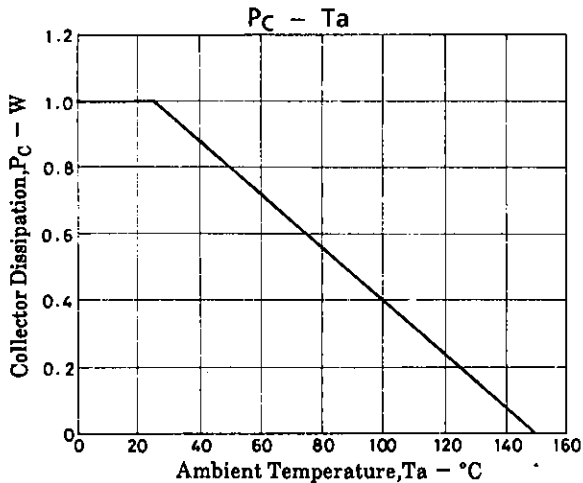
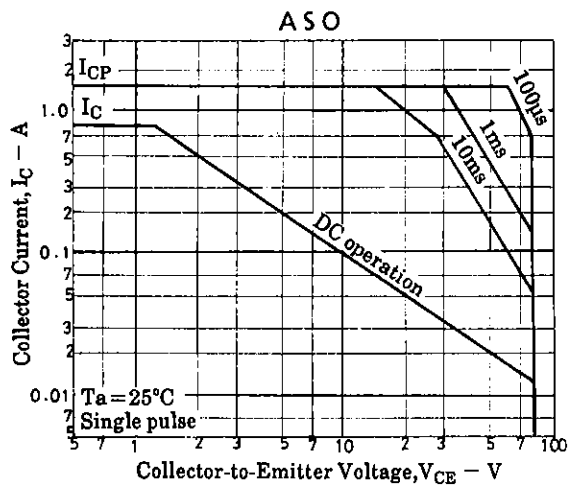
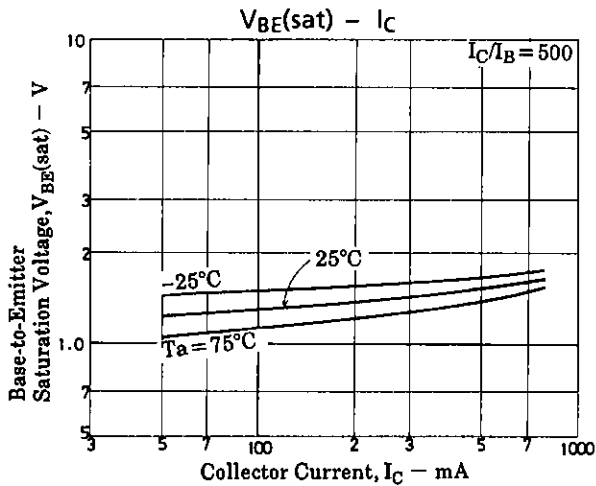
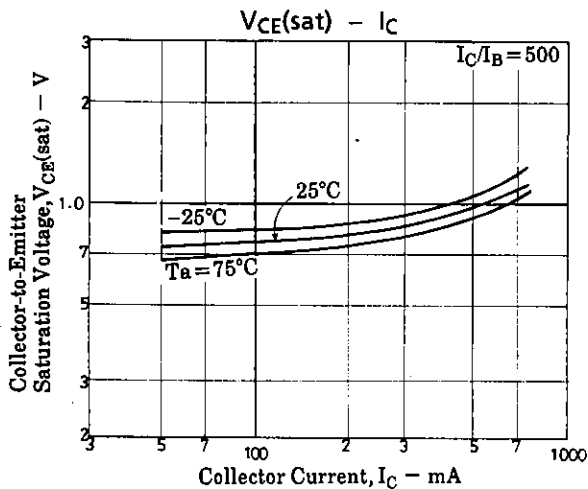
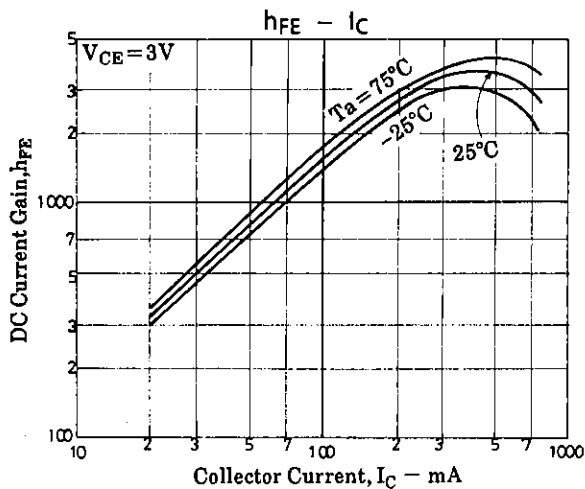
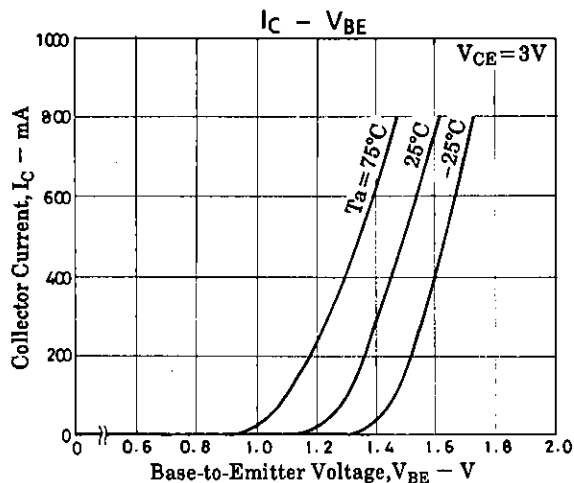
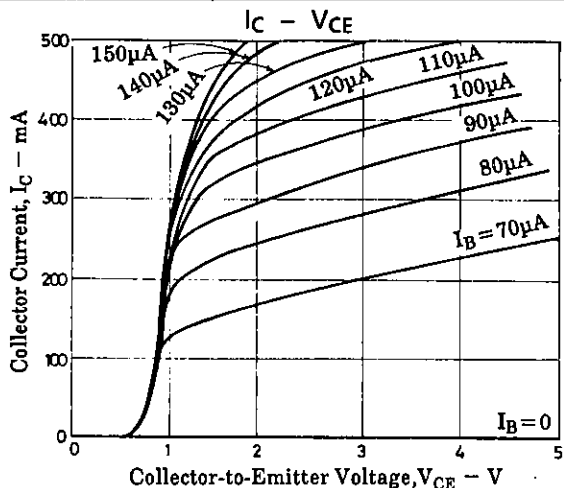
(unit : mm)



- 1 : Emitter
- 2 : Collector
- 3 : Base

SANYO : NMP

SANYO Electric Co., Ltd. Semiconductor Business Headquarters
TOKYO OFFICE Tokyo Bldg., 1-10, 1 Chome, Ueno, Taito-ku, TOKYO, 110 JAPAN



- No products described or contained herein are intended for use in surgical implants, life-support systems, aerospace equipment, nuclear power control systems, vehicles, disaster/crime-prevention equipment and the like, the failure of which may directly or indirectly cause injury, death or property loss.
- Anyone purchasing any products described or contained herein for an above-mentioned use shall:
 - ① Accept full responsibility and indemnify and defend SANYO ELECTRIC CO., LTD., its affiliates, subsidiaries and distributors and all their officers and employees, jointly and severally, against any and all claims and litigation and all damages, cost and expenses associated with such use;
 - ② Not impose any responsibility for any fault or negligence which may be cited in any such claim or litigation on SANYO ELECTRIC CO., LTD., its affiliates, subsidiaries and distributors or any of their officers and employees jointly or severally.
- Information (including circuit diagrams and circuit parameters) herein is for example only; it is not guaranteed for volume production. SANYO believes information herein is accurate and reliable, but no guarantees are made or implied regarding its use or any infringements of intellectual property rights or other rights of third parties.

This catalog provides information as of February, 1997. Specifications and information herein are subject to change without notice.