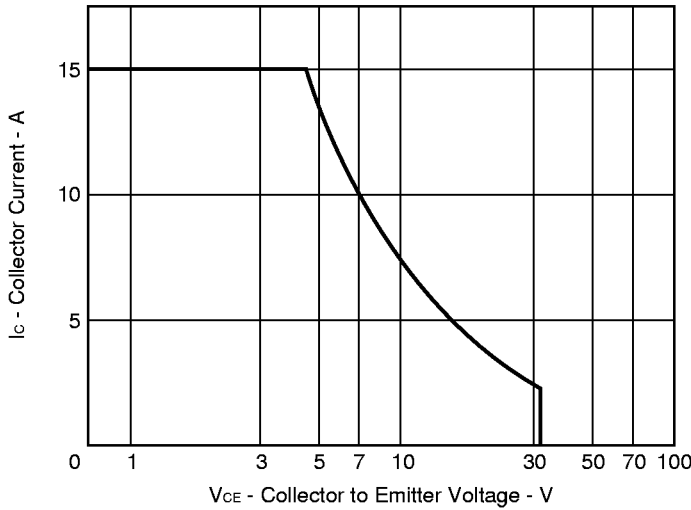


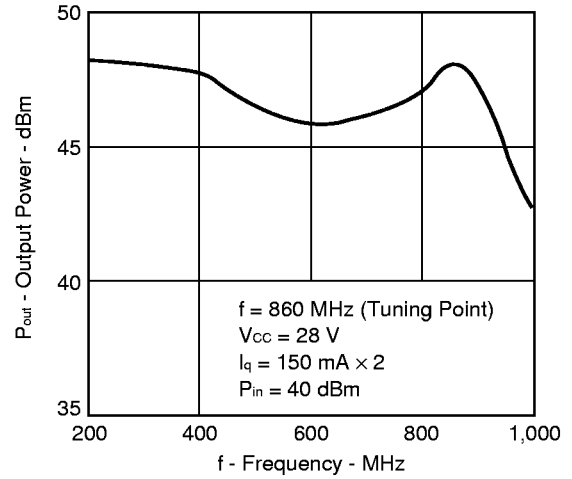


TYPICAL CHARACTERISTICS (T<sub>A</sub> = 25 °C)

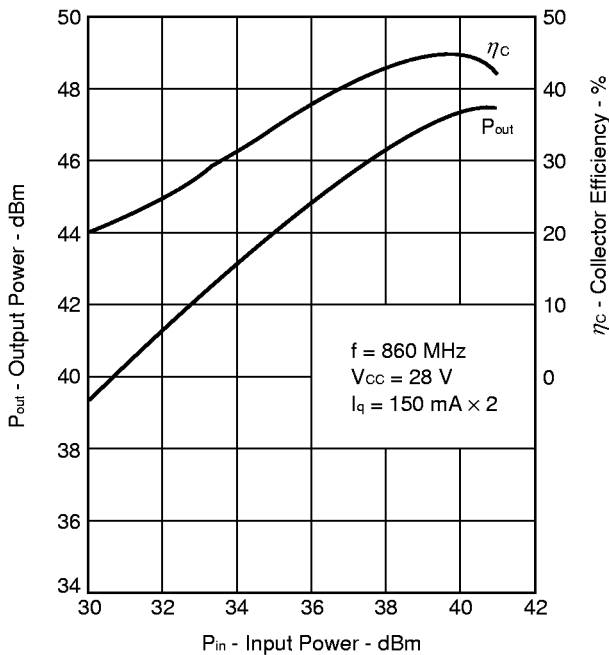
FORWARD BIAS SAFE OPERATING AREA (DC)



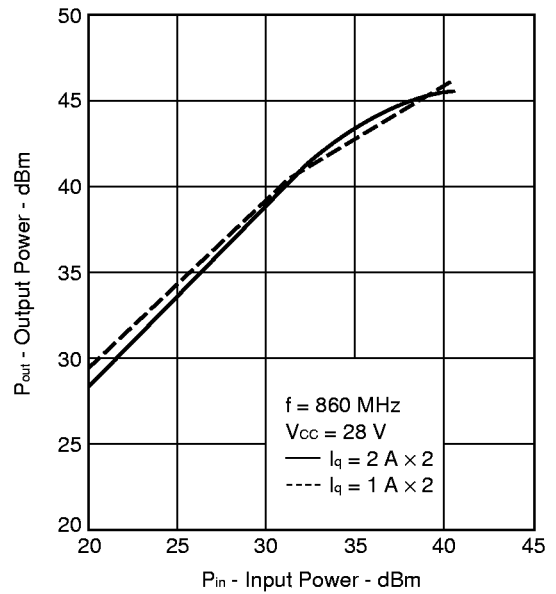
FREQUENCY RESPONSE



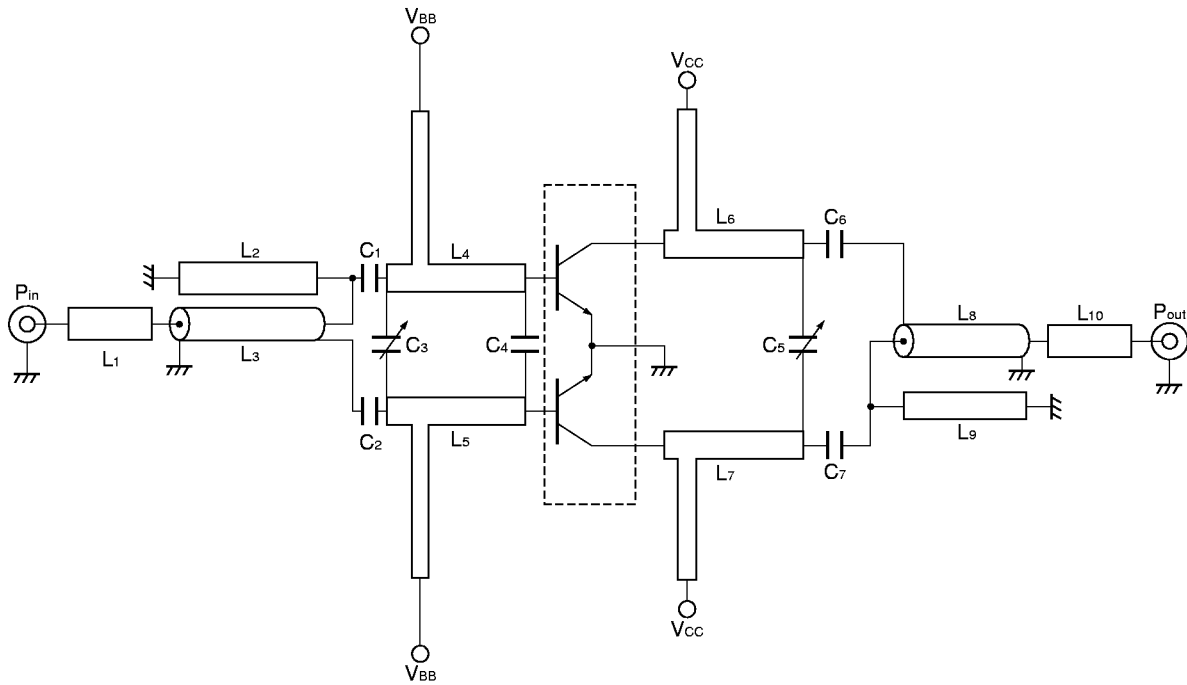
OUTPUT POWER AND COLLECTOR EFFICIENCY vs. INPUT POWER



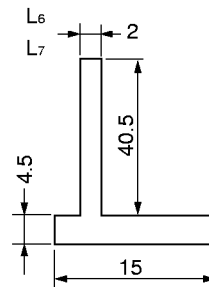
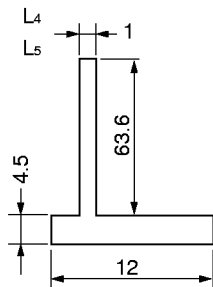
OUTPUT POWER vs. INPUT POWER



APPLICATION CIRCUIT EXAMPLE



- C<sub>1</sub> = C<sub>2</sub> = 20 pF
- C<sub>3</sub> = 20 pF
- C<sub>4</sub> = 10 pF
- C<sub>5</sub> = 20 pF
- C<sub>6</sub> = C<sub>7</sub> = 75 pF
- L<sub>1</sub> L<sub>10</sub> Micro-strip line 23.6 × 4.5 mm
- L<sub>2</sub> L<sub>9</sub> 50 Ω Semi-rigid cable 70 mm
- L<sub>4</sub> to L<sub>7</sub> Micro-strip line (in millimeters)



Substrate material: Teflon glass t = 1.6 mm