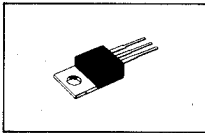


No.1309



2SC3173

NPN Epitaxial Planar Type Silicon Transistor
FOR CRT HORIZONTAL DEFLECTION OUTPUT

Features:

- High switching speed
- Especially suited for use in high-definition CRT display ($V_{CC}=6$ to $12V$)
- Wide ASO and durable against breakdown

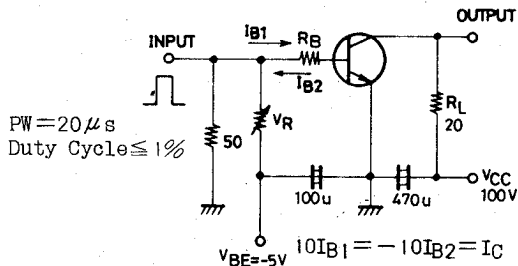
Absolute Maximum Ratings at $T_a=25^\circ C$

			unit
Collector to Base Voltage	V_{CBO}	330	V
Collector to Emitter Voltage	V_{CEO}	150	V
Emitter to Base Voltage	V_{EBO}	6	V
Collector Current	I_C	7	A
Peak Collector Current	i_{cp}	12	A
Base Current	I_B	4	A
Collector Dissipation	P_C	$T_c=25^\circ C$ 50	W
Junction Temperature	T_j	150	$^\circ C$
Storage Temperature	T_{stg}	-55 to +150	$^\circ C$

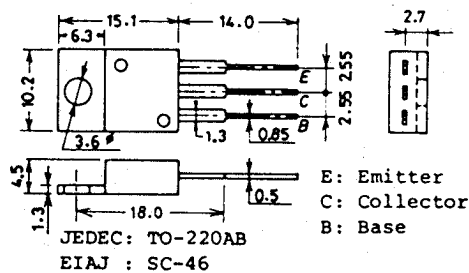
Electrical Characteristics at $T_a=25^\circ C$

			min	typ	max	unit
Collector Cutoff Current	I_{CBO}	$V_{CB}=200V, I_E=0$			100	μA
Emitter Cutoff Current	I_{EBO}	$V_{EB}=5V, I_C=0$			100	μA
DC Current Gain	$h_{FE}(1)$	$V_{CE}=1V, I_C=1A$	15			
	$h_{FE}(2)$	$V_{CE}=1V, I_C=5A$	10		50	
Gain Bandwidth Product	f_T	$V_{CE}=10V, I_C=0.5A$	10	40		MHz
C-E Saturation Voltage	$V_{CE}(sat)$	$I_C=5A, I_B=0.5A$			1	V
B-E Saturation Voltage	$V_{BE}(sat)$	$I_C=5A, I_B=0.5A$			1.2	V
C-B Breakdown Voltage	$V(BR)_{CBO}$	$I_C=1mA, I_E=0$	330			V
C-E Breakdown Voltage	$V(BR)_{CEO}$	$I_C=1mA, R_{BE}=\infty$	150			V
E-B Breakdown Voltage	$V(BR)_{EBO}$	$I_E=1mA, I_C=0$	6			V
Fall Time	t_f	$I_C=5A, I_{B1}=-I_{B2}=0.5A$			0.5	μs

Switching Time Test Circuit



Case Outline 2010A (unit:mm)



Information furnished by SANYO is believed to be accurate and reliable. However, no responsibility is assumed by SANYO for its use; nor for any infringements of patents or other rights of third parties which may result from its use, and no license is granted by implication or otherwise under any patent or patent rights of SANYO.

These specifications are subject to change without notice.