

SANYO	No.2974A	2SA1700
	PNP Epitaxial Planar Silicon Transistor	
High-Voltage Driver Applications		

Features

- High breakdown voltage
- Adoption of MBIT process
- Excellent h_{FE} linearity

Absolute Maximum Ratings at $T_a = 25^\circ\text{C}$

Collector to Base Voltage	V_{CB0}	-400	V	unit
Collector to Emitter Voltage	V_{CEO}	-400	V	
Emitter to Base Voltage	V_{EBO}	-5	V	
Collector Current	I_C	-200	mA	
Collector Current(Pulse)	I_{CP}	-400	mA	
Collector Dissipation	P_C	1	W	
		10	W	
Junction Temperature	T_j	150	$^\circ\text{C}$	
Storage Temperature	T_{stg}	-55 to +150	$^\circ\text{C}$	

$T_c = 25^\circ\text{C}$

Electrical Characteristics at $T_a = 25^\circ\text{C}$

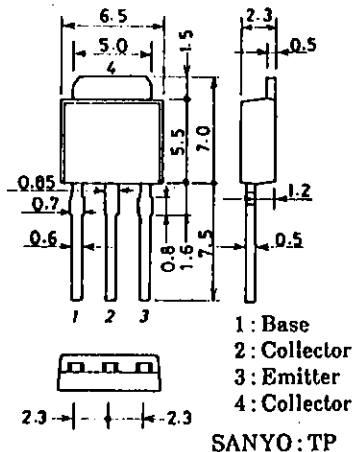
			min	typ	max	unit
Collector Cutoff Current	I_{CBO}	$V_{CB} = -300\text{V}, I_E = 0$			-0.1	μA
Emitter Cutoff Current	I_{EBO}	$V_{EB} = -4\text{V}, I_C = 0$			-0.1	μA
DC Current Gain	h_{FE}	$V_{CE} = -10\text{V}, I_C = -50\text{mA}$	60*		200*	
Gain-Bandwidth Product	f_T	$V_{CE} = -30\text{V}, I_C = -10\text{mA}$		70		MHz
C-E Saturation Voltage	$V_{CE(sat)}$	$I_C = -50\text{mA}, I_B = -5\text{mA}$			-0.8	V
B-E Saturation Voltage	$V_{BE(sat)}$	$I_C = -50\text{mA}, I_B = -5\text{mA}$			-1.0	V
C-B Breakdown Voltage	$V_{(BR)CBO}$	$I_C = -10\mu\text{A}, I_E = 0$	-400			V
C-E Breakdown Voltage	$V_{(BR)CEO}$	$I_C = -1\text{mA}, R_{BE} = \infty$	-400			V
E-B Breakdown Voltage	$V_{(BR)EBO}$	$I_E = -10\mu\text{A}, I_C = 0$	-5			V

Continued on next page.

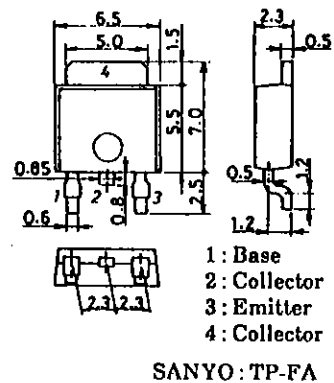
* : The 2SA1700 is classified by 50mA h_{FE} as follows :

60 D 120	100 E 200
----------	-----------

Package Dimensions 2045B
(unit : mm)



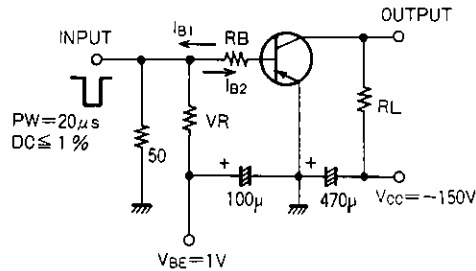
Package Dimensions 2044B
(unit : mm)



Continued from preceding page.

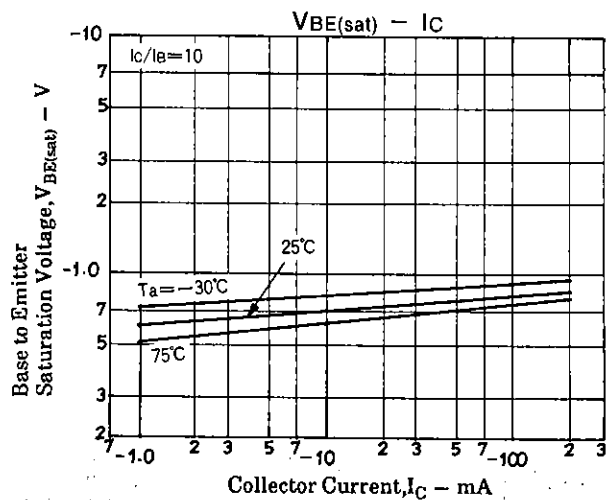
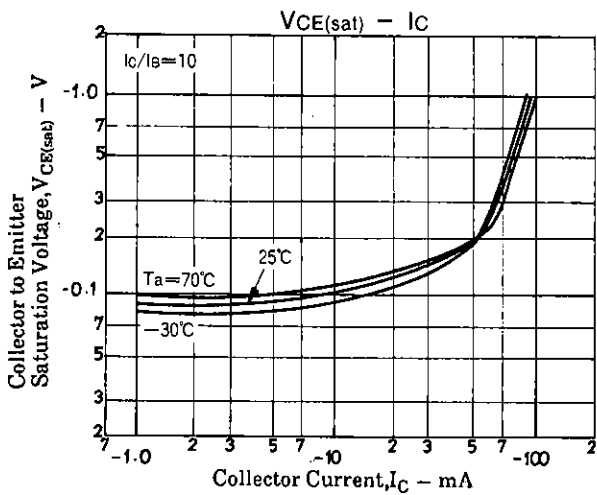
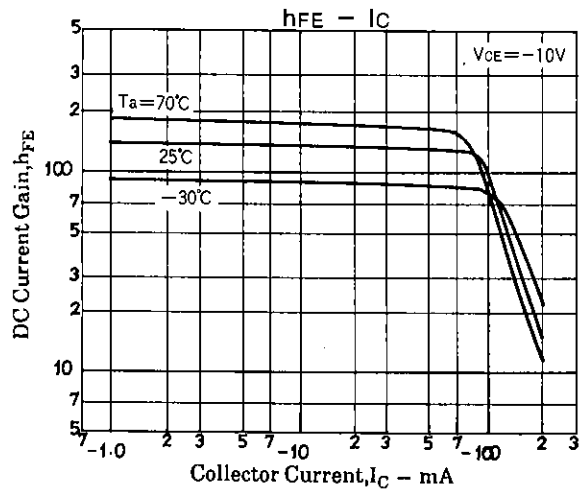
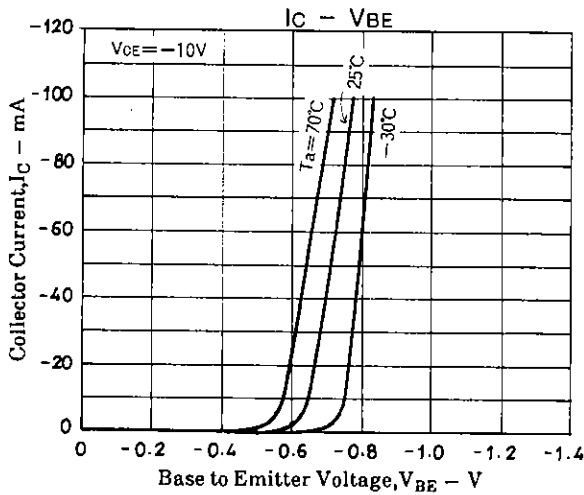
			min	typ	max	unit
Output Capacitance	C_{ob}	$V_{CB} = -30V, f = 1MHz$			5	pF
Reverse Transfer Capacitance	C_{re}	$V_{CB} = -30V, f = 1MHz$			4	pF
Turn-ON Time	t_{on}	See specified Test Circuit.		0.25		μs
Turn-OFF Time	t_{off}	"		5		μs

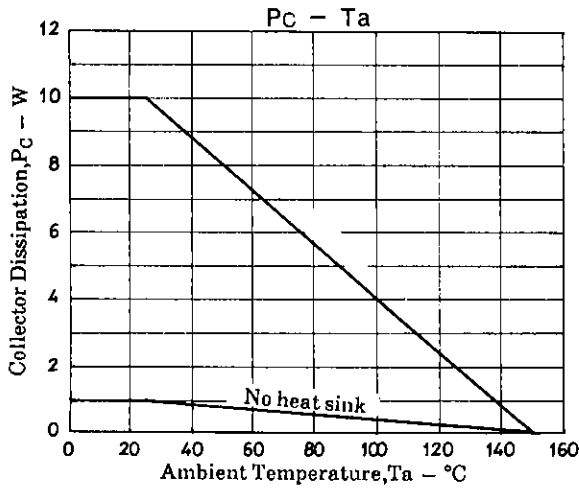
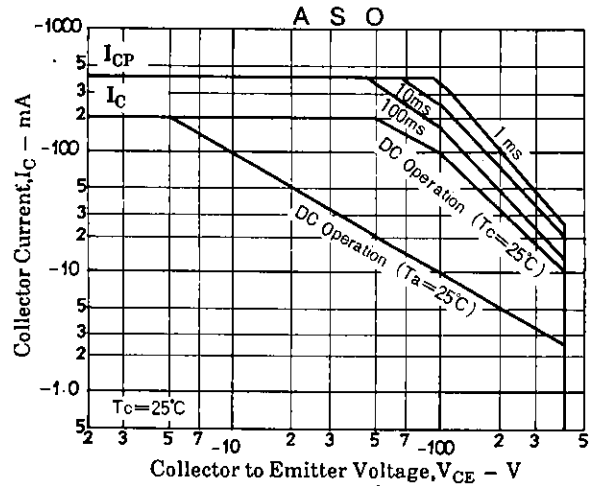
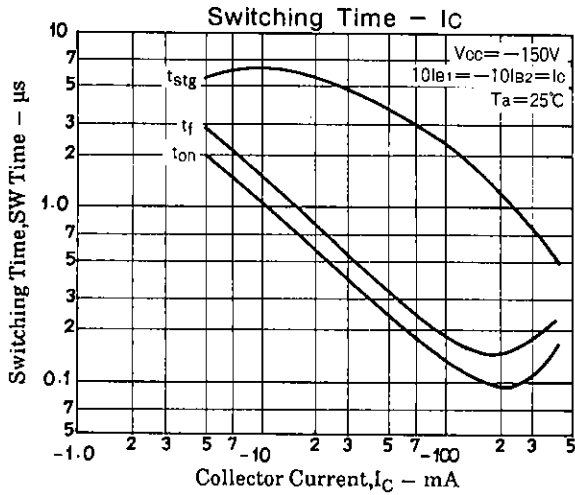
Switching Time Test Circuit



$-10I_{B1} = 10I_{B2} = I_C = -50mA$
 $R_L = 3k\Omega, R_B = 200\Omega$ at $I_C = -50mA$

Unit (Resistance : Ω , Capacitance : F)





- No products described or contained herein are intended for use in surgical implants, life-support systems, aerospace equipment, nuclear power control systems, vehicles, disaster/crime-prevention equipment and the like, the failure of which may directly or indirectly cause injury, death or property loss.
- Anyone purchasing any products described or contained herein for an above-mentioned use shall:
 - ① Accept full responsibility and indemnify and defend SANYO ELECTRIC CO., LTD., its affiliates, subsidiaries and distributors and all their officers and employees, jointly and severally, against any and all claims and litigation and all damages, cost and expenses associated with such use:
 - ② Not impose any responsibility for any fault or negligence which may be cited in any such claim or litigation on SANYO ELECTRIC CO., LTD., its affiliates, subsidiaries and distributors or any of their officers and employees jointly or severally.
- Information (including circuit diagrams and circuit parameters) herein is for example only; it is not guaranteed for volume production. SANYO believes information herein is accurate and reliable, but no guarantees are made or implied regarding its use or any infringements of intellectual property rights or other rights of third parties.